



GLens – Remote Calibration System as per CPCB Guidelines



GLen is a real time data acquisition, monitoring, reporting and analytics software for environmental data and adheres to the requirements of EN14181 and MCERTS certified Environmental Data Management Software requirements for Environmental and Continuous Emissions Monitoring reporting systems.

The GLens software provides modules for monitoring and analytics of Continuous Ambient Air Quality Monitoring Stations (CAAQMS), Continuous Emission Monitoring Systems (CEMS), Continuous Effluent Quality Monitoring Systems (CEQMS). The main functions include monitoring station configuration (sites, stations and analyzers), technical data management (data acquisition, normalization, validation, calibration etc.), data processing (data display, reporting) and advanced analytics (time-series analytics, forecasting, wind rose, pollution rose, Air Quality index etc.).

Software components

GLens Remote Calibration System

Complete Remote Calibration unit packaged with all controls and instrumentation ready for performing remote calibration from CPCB Server/ SPCB Server. HMI for local calibration

GLens Remote Calibration Software

Complete software system with all reporting package for remote calibration as per regulatory requirements. Complete QAL 2, QAL 3 and AST reporting as per EN14181 Standards

The Benefits

1. Remote calibration

- Remote calibration, configuration and complete protocol integration with diagnostics.
- Supports immediate and scheduled Remote Calibration of Analyzers
- Auto generation of QAL3 Reports and CUSUM, SHEWART and EWMA Charts
- Validation system for QAL 2, QAL 3 and AST

2. Connect any Analyzer, any Protocol

- Analyzer agnostic platform that helps connect any analyzer make and model.
- Automated device discovery, auto-provisioning

3. Monitor real-time and at scale

- Live Remote Calibration status, parameter monitoring and online collaboration with industries.
- Real-time Data Integrity, Data Quality monitoring, and automated data validation

Remote calibration requirement

As per the COMPLIANCE REPORTING PROTOCOLS FOR ONLINE CONTINUOUS EMISSION & EFFLUENT MONITORING SYSTEMS published by CPCB on 13th March, 2018 requires the industries to submit their Calibration procedures adopted. Also the details of instruments supporting remote calibration, calibration data and calibration history are to be provided. As part of GLens we are fully compliant with the requirements for Remote Calibration and Check Procedures laid down by CPCB.

Key Features



No Static IP required



Any Remote Calibration Analyzer
Make and Model



Remote calibration possible with
Analog Analyzers
(4-20mA output)



NIST Certified Gases along with
Certificates (optional)



Compact Design with Gas control Solenoid valves and valve controller.



Performs 2 point calibration check (zero and span)



Pre-built Remote Calibration Reports for Regulatory Compliance including IED reports



Live Consolidated Dashboards including Analyzer Status and Faults

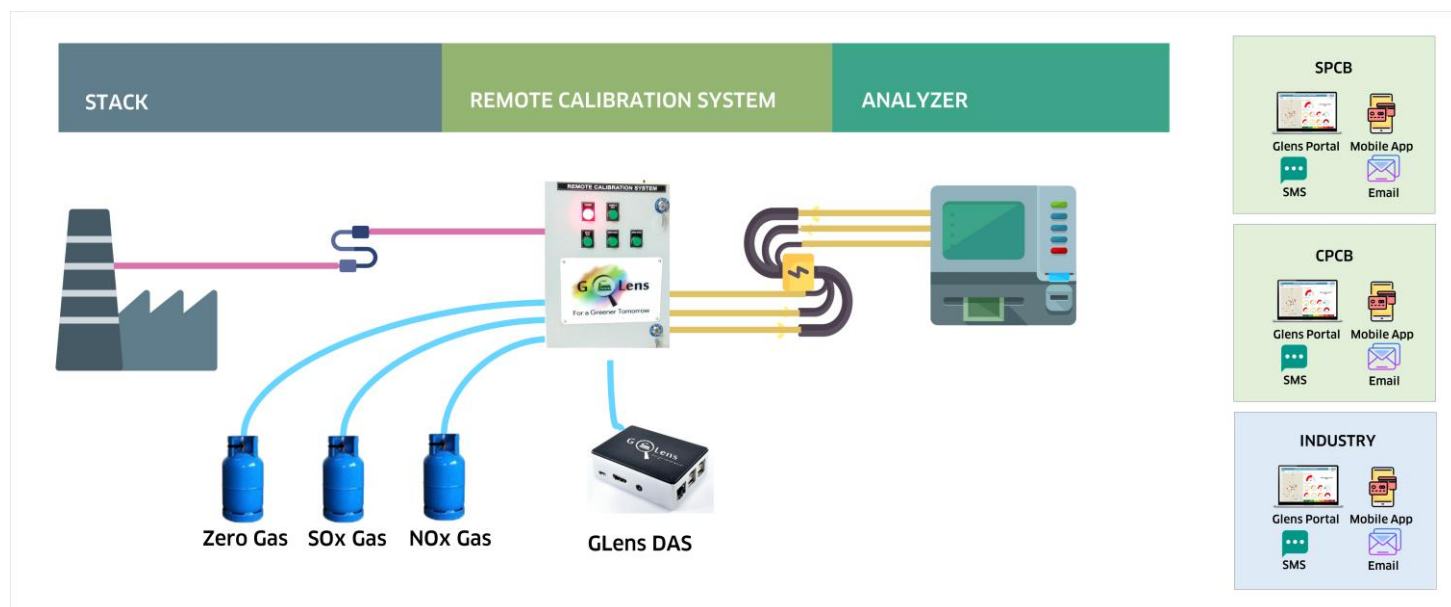


Secured , High integrity data transfer with encryption and digital signature

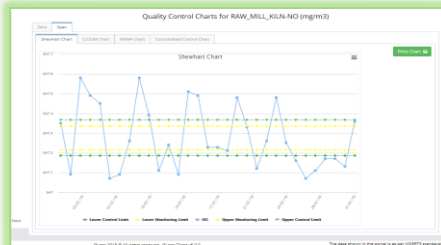
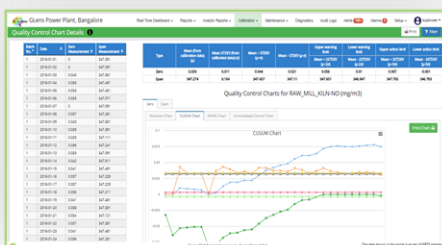
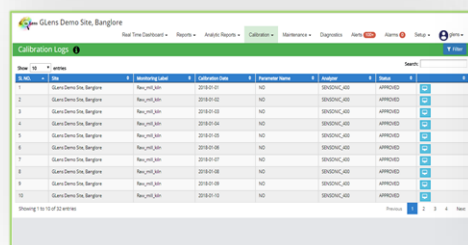
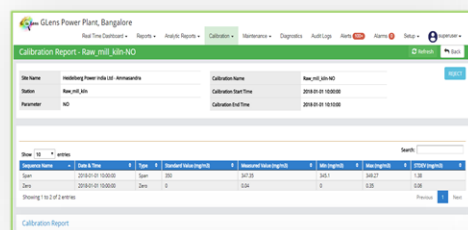


Auto generation of Qual 3 Reports and CUSUM, SHEWART and EWMA charts

Conceptual Architecture of GLens



Everything at one place, right in front of you



We make the world, a better place to live.

Request for a demo

✉ sales@knowledgeLens.com

📦 Delivery in less than 3 weeks.



About Knowledge Lens

Knowledge Lens is a US-based product technology company that builds domain-specific Data Lenses that enable the discovery of actionable insights from Enterprise Data Assets. Our team of tech experts work on cutting edge technologies such as Big data, AI, IoT, Blockchain and Cloud to add differentiated value to our customers. Our mission is to turn enterprises' dark data into meaningful business insights.

We have successfully transformed Fortune 500 companies into Smart Enterprises by implementing Next Generation Enterprise Data Lakes (Serverless Architecture), AI powered Intelligent Apps and Industry 4.0 Solutions- both on premise and on the cloud.

Our Product Gallery



Accelerating AI for Enterprise



Revolutionizing IoT & AI for Industry 4.0



High Speed Big Data Backup & Disaster Recovery Suite for Enterprise



Real-time Environment Data Acquisition Monitoring & Analytics Suite

Contact Us

US – California

Knowledge Lens LLC
Thousand Oaks, 2800,
Camino Dos Rios,
Suite 101C, CA 91320,
United States.

☎ +1 805 768 4040

India - Bangalore

Knowledge Lens Private Limited
74/A, Keonics,
Electronic City Phase-I,
Bangalore- 560 100,
Karnataka, India

☎ +91-9739103723

For more information, contact:
sales@knowledgeLens.com

Knowledge Lens
Accelerating Actionable Insights

www.knowledgeLens.com